

# Tā tātou pūnaha mō te hauora me te hauātanga

## Whakahaumanu matua, whakahaumanu hapori

Ko ngā ratonga matua me ngāratonga hapori, ngā mea e whakamahia nuitia ana e ngā tāngata o Aotearoa i a rātou e tono ana i te whakahaumanu hauora i ō rātou kāinga, i ō rātou wāhi. Ka whakaratoa ēnei ratonga e ngā tākuta whānui, ngā kaiwhakarite rongoa, ngā tapuhi, ngā hoa hauora ngāio, ngā kairato Māori, ngākairato o te Moana-nui-a-Kiwa, ngā rata niho me ngā kaituku haumanu ā-niho, ngā kaimahi whakahaumanu whare, ngā nēhi ā-rohe, ngā ratonga hauora hinengaro ā-hapori, ngā nēhi hauora tūmatanui me ngā kaiwhakarato whakahaumanu kaumātua kia noho ora tonu ai ngā tāngata i te kāinga, i te hapori.

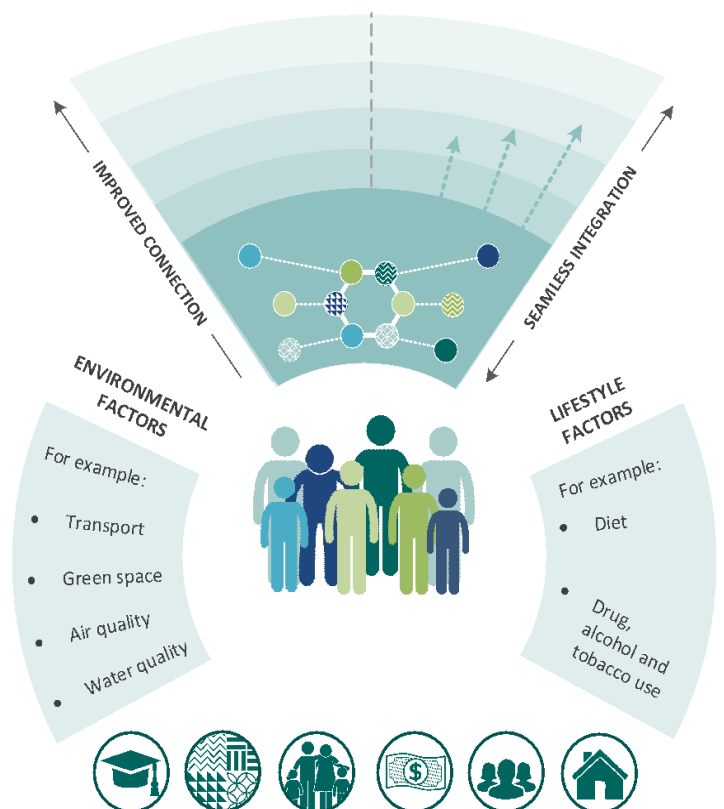
### He aha e panonitia ana?

Hei ngā tau e heke mai nei, ka panonitia te āhua o ngā ratonga matua me ngā ratonga hapori kia whakaratoa ai ngā hapori o Aotearoa mā 'ngā wāhi'. Ka taurite te kohinga ratonga matua ki ia wāhi, heoi, ko te āhua o te whakarato i ēnei ratonga, kei te āhua tonu o ngā matea me ngā whāinga matua o tēnā hapori, o tēnā hapori.

Ka whai wāhi ngā hapori, i te taha o ngā Poari Kōtuiti Iwi-Māori, ki te waihanga i ngā mahere ā-wāhi ka whakatau i ngā whāinga matua mā ngā ratonga hauora ā-wāhi. Mā ēnei mahere e whakatakoto te āhua o te whakarato i ngā ratonga matua me ngāratonga hapori ā haere ake nei, ā, ka aro hoki ki ngā āhuatanga whānui ā-hapori, ā-ōhanga e āki ana i ngā matea hauora.

Ka tono tahi atu a Hauora Aotearoa me te Mana Hauora Māori i ngā ratonga i raro i tēnei mahere kia hāpaitia ai ngā matea o ngā wāhi.

Ka whakarato tonutia e te kohinga kaiwhakarato ā-wāhi te whakahaumanu i roto o te hapori, heoi, ka hono atu ēnei kaiwhakarato ki tētahi kāhui ā-wāhi, i raro hoki i āna whāinga kotahi.



I te tauira kāhui, ka pai ake te ruruku me te whakakotahi i te whakahaumanu, ka whai hoki te pārongo i ngā kiritaki ka haere ana rātou ki kaiwhakarato kē. Ka tautoko hoki te tauira kāhui i te whakahaumanu ngāwari e pātata ake ana ki te kāinga, ā, ka whakamahia te hangarau hoki kia hāpaitia ai te whakawhānuitia o ngā momo whakahaumanu ā-matihiko.

## He aha ai?

He roa ake tō te tangata oranga, he whīwhiwhi ake hoki ōna mate i ēnei rā. I ngā whenua whānui he taunaki e mea ana he kounga ake tō te tangata oranga mēnā e whakaratoa ana te whakahaumanu i tōna kāinga, i tōna hapori rānei, nā te whakawāteatia ongā tāngata kia kori tonu rātou, kia noho tonu hoki ki ērā e arohaina ana e rātou mō te roanga o te wā e taea ana.

Mā te panoni i te whakahaumanu matua me tewhakahaumanu hapori kia noho ā-wāhi, e taea ai e tātou ngā hua hauora ā-wāhi te whakapiki. Ka tukuate mana kōrero ki ngā hapori e taea ai e rātou te kōrero mō te whakaratonga o te whakahaumanu i ō rātau wāhi me te whakahāngai i te whakahaumanu kia hāpaitia ai ngā matea me ngā whāinga matua o te wāhi. Mā te whakakaha hoki i ngā hononga i ngā kāhui kaiwhakarato e pai ake ai te ruruku i te whakahaumanu matua me te whakahaumanu hapori kiapiki ai te wheako me ngā hua o te whakahaumanu.

## Ka pēhea tōna āhua ā te anamata?

Mā te mahere ā-wāhi e whai wāhi mai ai ngā tāngata ki te kōrero mō ngā whāinga i ō rātou hapori me te āhua o te whakarato i ngā ratonga. Mā te mahere nei ka tonoa e Hauora Aotearoa me te Mana Hauora Māori ngā ratonga hei hāpai i ngā matea ā-wāhi me ngā manako ā-motu. Ka mate pea tātou ki te waihanga anō i ngā ratonga i ngā wāhi e hāpaitia ai ngā matea o te hapori, e kitea ai rānei ngā whāinga hauora matua hou. Mātāmua ake, ka āta aroturuki a Hauora Aotearoa me te Mana Hauora Māori i te whakahaumanu me ngā hua kia tika ai te manaakitia o te hapori.

I te nuinga o te wā, ka ōrite tonu te hononga o te tangata ki ōna kaiwhakarato hauora i te hapori. Ko te rerekētanga matua; ka nui ake te tautokona o ērā kaiwhakarato kia hono ai, kia ngātahi ai tā rātou whakahaumanu.

## He aha ewhai ake nei?

He nui tonu ngā mahi kei mua i te aroaro mō te waihanga i te āhua o te whakahaerenga o ngā wāhi nei. Hei ngā marama e heke mai nei, ka mahi tahi te Kāwanatanga ki ngā kaiwhakarato whakahaumanu matua, whakahaumanu hapori, me ētahi atu o te hunga whaipānga kiatika katoa ai ngā taipitopito.

## Kei te pīrangi ki ētahi anō kōrero?

Ko te roanga ake o ngā whakamāramatanga e pā ana ki tēnei mahi me te ahunga o ngā waihanga hou mō te hauora kei te pae tukutuku a DPMC, kei te wāhi mō te Transition Unit:

[www.dPMC.govt.nz/our-business-units/transition-unit](http://www.dPMC.govt.nz/our-business-units/transition-unit)